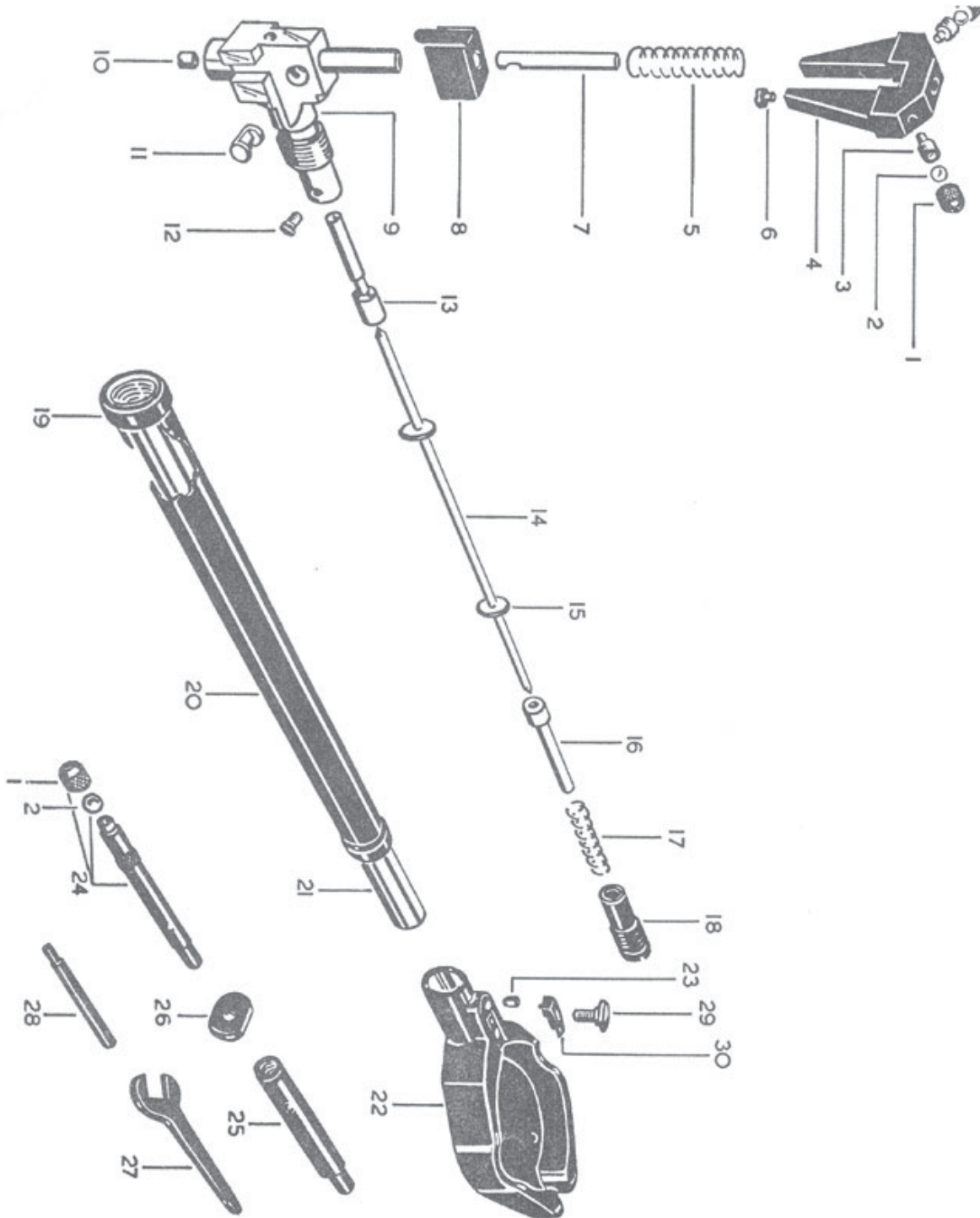


# Bore Gauge Parts

Series 215 Parts



# Series 215 Bore Gauge Parts

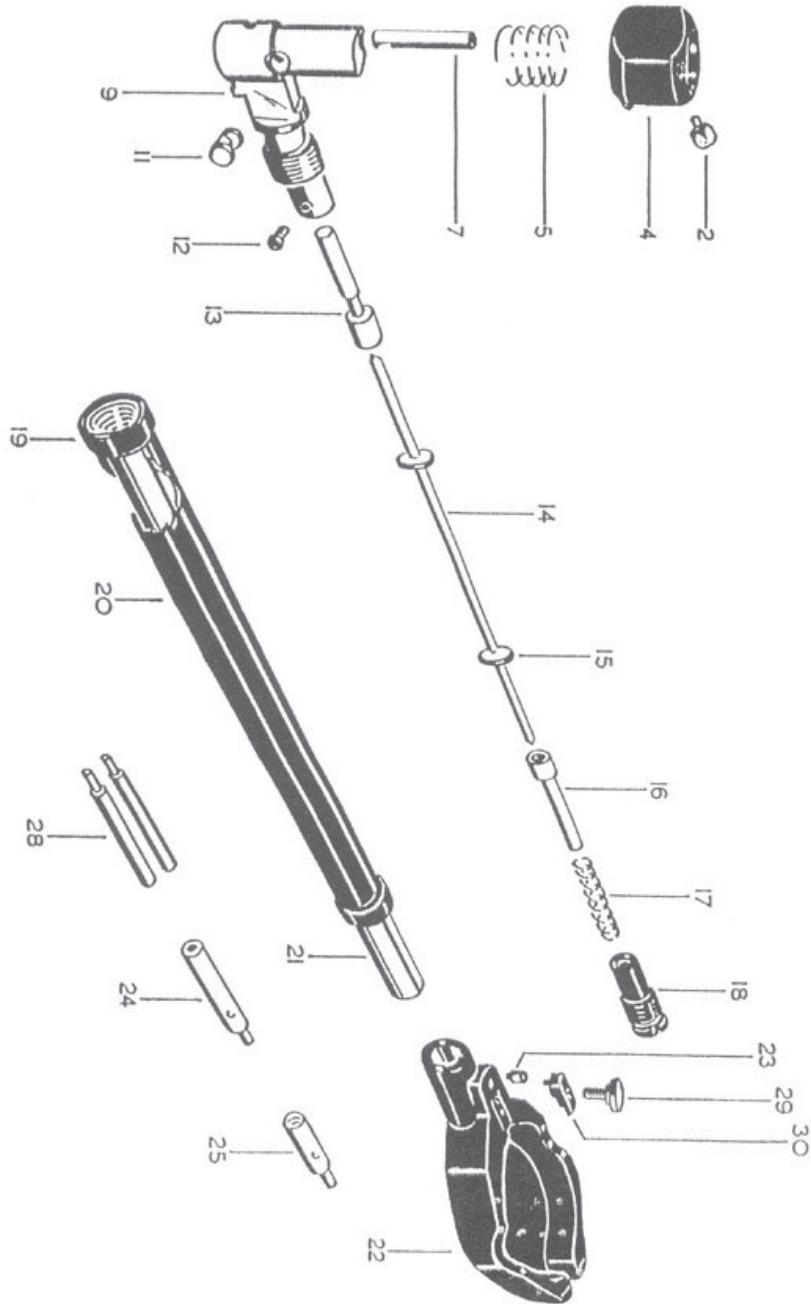
DRAWING REFERENCE NO.	PART NO.	DESCRIPTION	PRICE
1	C215/25	Ball Anvil Nut	\$8.00
2	C215/26	Steel Ball (3/16" Diameter)	\$10.10
2a	C215/26TC	Carbide Ball (3/16" Diameter)	\$16.00
3	C215/24	Ball Anvil Seating	\$10.10
4	C215/3	Shoe	\$52.00
4a	C215/3M	Shoe (Metric)	\$52.00
5	C215/4	Shoe Spring	\$2.40
6	RD10/654	Shoe Stop Screw	\$2.00
7	C215/5	Contact Plunger	\$26.00
8	C215/31	Bell Crank Cover	\$10.50
9	C215/2	Bottom Section	\$156.80
10	C215/27	Plug	\$2.20
11	C210/7	Bell Crank	\$30.00
12	C210/48	Lower Plunger Retaining Screw	\$8.00
13	C210/8	Lower Plunger	\$37.30
13a	C210/8M	Lower Plunger (Metric)	\$37.30
16	C210/10	Upper Plunger	\$25.00
17	C210/11	Return Plunger Spring	\$8.80
18	C210/9	Upper Plunger Guide	\$16.50

DRAWING REFERENCE NO.	PART NO.	DESCRIPTION	PRICE
22	C215/1	Shroud (4 - Hole)	\$42.00
22a	C215-1/BM	Shroud (3 - Hole)	\$42.00
23	C210/49	Shroud Retaining Screw	\$12.00
24	C215/14	Extension Rod (2" to 2-1/4")	\$20.20
	C215/14M	Extension Rod (51mm to 57mm)	\$20.20
24a	C215/15	Extension Rod (2-1/4" to 2-1/2")	\$20.20
	C215/15M	Extension Rod (57mm to 63mm)	\$20.20
24b	C215/16	Extension Rod (2-1/2" to 2-3/4")	\$20.20
	C215/16M	Extension Rod (63mm to 69mm)	\$20.20
24c	C215/17	Extension Rod (2-3/4" to 3")	\$20.20
	C215/17M	Extension Rod (69mm to 76mm)	\$20.20
24d	C215/18	Extension Rod (3" to 3-1/4")	\$20.20
	C215/18M	Extension Rod (76mm to 82mm)	\$20.20
24e	C215/19	Extension Rod (3-1/4" to 3-1/2")	\$20.20
	C215/19M	Extension Rod (82mm to 89mm)	\$20.20
24f	C215/20	Extension Rod (3-1/2" to 3-3/4")	\$20.20
	C215/20M	Extension Rod (89mm to 95mm)	\$20.20
24g	C215/21	Extension Rod (3-3/4" to 4")	\$20.20
	C215/21M	Extension Rod (95mm to 102mm)	\$20.20
*24i	PSE21510EXT SET	Extension Set	\$200.00
25	C215/12	Sleeve Cap Adaptor	\$22.00
25a	C215/12M	Sleeve Cap Adaptor (Metric)	\$22.00
26	C215/13	Extension Rod Locknut	\$8.00
27	C215/22	Spanner	\$4.10
28	C215/23	Tommy Bar	\$2.50
29	RD10/93	Bezel Clamp	\$2.20
30	RD10/94	Bezel Clamp Screw	\$3.40

\* Extension Set includes extensions from 2" - 2-1/4" through 3-3/4" - 4", adapter, extension rod locknut, tommy bar, and spanner (wrench) (Metric Extension Set also available)

# Bore Gauge Parts

Series 210 Parts



# Series 210 Bore Gauge Parts

DRAWING REFERENCE NO.	PART NO.	DESCRIPTION	PRICE
2	C210/4	Shoe Contact	\$12.00
4	C210/3	Shoe	\$58.00
5	C210/5	Shoe Spring	\$3.10
7	C210/6	Contact Plunger	\$41.50
9	C210/2	Bottom Section	\$150.00
11	C210/7	Bell Crank	\$30.00
12	C210/48	Lower Plunger Retaining Screw	\$8.00
13	C210/8	Lower Plunger	\$37.30
15	C210/93	Middle Plunger Guide	\$1.10
16	C210/10	Upper Plunger	\$25.00
17	C210/11	Return Spring	\$8.80
18	C210/9	Upper Plunger Guide	\$16.50
22	C215/1	Shroud	\$42.00
23	C210/49	Shroud Retaining Screw	\$12.00
24	C210/33	Extension Rod (7/8" to 15/16")	\$32.20
24a	C210/34	Extension Rod (15/16" to 1")	\$32.20
24b	C210/35	Extension Rod (1" to 1-1/16")	\$32.20
24c	C210/36	Extension Rod (1-1/16" to 1-1/8")	\$32.20
24d	C210/37	Extension Rod (1-1/8" to 1-3/16")	\$32.20
24e	C210/38	Extension Rod (1-3/16" to 1-1/4")	\$32.20
24f	C210/39	Extension Rod (1-1/4" to 1-5/16")	\$32.20
24g	C210/40	Extension Rod (1-5/16 to 1-3/8)	\$32.20
24h	C210/41	Extension Rod (1-3/8" to 1-7/16")	\$32.20
*24i	PSE21010EXT SET	Extension Set	\$300.00
25	C210/43	Adaptor	\$14.10
25	C210/44	Tommy Bar	\$15.50
29	RD10/94	Bezel Clamp Screw	\$3.40
30	RD10/93	Bezel Clamp	\$2.20

\* Extension Set includes extensions from 7/8" - 15/16" through 1-3/8" - 1-7/16", adaptor, extension rod locknut, tommy bar, and spanner (wrench)