

Worm Gear Clamps

FEATURES:

- 5/16" Hex
- Stainless Steel Band
- Can Be Used on Any Hose
- Available with Stainless Steel or Plated Carbon Screws



With Stainless Steel Screw

PART NO.	FITS HOSE O.D. SIZE		PRICE EACH
	FROM	TO	
SSHC-6*	7/16"	25/32"	Call for Pricing
SSHC-8	1/2"	29/32"	
SSHC-10	9/16"	1 ¹ / ₁₆ "	
SSHC-12	11/16"	1 ¹ / ₄ "	
SSHC-16	13/16"	1 ¹ / ₂ "	

*Narrow Band - mini clamp

With Plated Carbon Steel Deep-Slotted Screw

PART NO.	FITS HOSE O.D. SIZE		PRICE EACH
	FROM	TO	
PSHC-4*	7/32"	5/8"	Call for Pricing 800-627-1033
PSHC-6*	5/16"	7/8"	
PSHC-8	7/16"	1"	
PSHC-10	9/16"	1 ¹ / ₁₆ "	
PSHC-12	9/16"	1 ¹ / ₄ "	
PSHC-16	11/16"	1 ¹ / ₂ "	
PSHC-20	3/4"	1 ³ / ₄ "	
PSHC-24	1 ¹ / ₁₆ "	2"	
PSHC-28	1 ⁵ / ₁₆ "	2 ¹ / ₄ "	
PSHC-32	1 ⁹ / ₁₆ "	2 ¹ / ₂ "	
PSHC-36	1 ¹³ / ₁₆ "	2 ³ / ₄ "	
PSHC-40	2 ¹ / ₁₆ "	3"	
PSHC-44	2 ⁵ / ₁₆ "	3 ¹ / ₄ "	
PSHC-48	2 ⁹ / ₁₆ "	3 ¹ / ₂ "	
PSHC-52	2 ¹³ / ₁₆ "	3 ³ / ₄ "	
PSHC-64	3 ⁹ / ₁₆ "	4 ¹ / ₂ "	
PSHC-72	4 ¹ / ₈ "	5"	

*Narrow Band - mini clamp with 1/4" hex

Other sizes available upon request.

Spiral Double-Bolt Clamps

FEATURES:

- Available in Clockwise Spiral & Counter-clockwise Spiral
- Recommended for Convuluted Hoses; Sizes 1¹/₂"-12"
- Reusable - THIS IS NOT A THROWAWAY CLAMP
- Lifetime Heavy Duty Clamp

FOR USE WITH OUR LINE OF SUCTION HOSES:

Clockwise Spiral

- Premium Suction Hose (ESH Series)
- Any Other Clockwise Spiral Hose

Counter-clockwise Spiral

- Tigerflex® Heavy Duty Suction Hose (SH Series)
- Tigerflex® Heavy Duty Suction Hose with Embedded Wire (SH-W Series)
- Tigerflex® Ureflex-1 Abrasion Resistant Suction Hose (USH Series)
- Any Other Counter-clockwise Spiral Hose



"The last clamp you will ever buy for ribbed suction hose!"

The Ultimate in Clamping for Your Vacuum Hose



PART NO.		FITS HOSE I.D. SIZE	PRICE EACH
Counter-clockwise Spiral Hose	Clockwise Spiral Hose		
SDBC150-CC	SDBC150	1 ¹ / ₂ ", 39mm	Call for Pricing
SDBC2-CC	SDBC2	2", 45mm	
SDBC225-CC	--	2 ¹ / ₄ ", 57mm	
SDBC250-CC	SDBC250	2 ¹ / ₂ "	
SDBC3-CC	SDBC3	3"	
SDBC350-CC	SDBC350	3 ¹ / ₂ "	
SDBC4-CC	SDBC4	4"	

Other sizes available upon request.

Safety Ear Clamps



1-Ear Clamp



2-Ear Clamp

FEATURES:

- Fast, Easy Installation — Won't Loosen Up In Service
- Economical, Tamper-proof, Safe — No Protruding Bands to Get Cut or Hung-up On
- Excellent for Use as a Safety Clamp with Push-on Hose and Fittings

1-Ear Clamp

Zinc Plated

PART NO.	NOMINAL SIZE	CLAMPING RANGE	PRICE EACH
EC113	7/16"	.381-.444"	Call for Pricing
EC145	9/16"	.496-.571"	
EC170	11/16"	.594-.669"	
EC185	23/32"	.618-.728"	
EC198	3/4"	.669-.779"	
EC210	13/16"	.716-.827"	
EC241	15/16"	.839-.949"	

Other sizes available on request.

PINCERS

For Manual Installation



ECP-1098



ECP-1099

PART NO.	DESCRIPTION	PRICE EACH
ECP-1098	Ear Clamp Pincers	Call for Pricing
ECP-1099	Side Jaw Pincers	

Dual-directional pincers enable you to apply clamps from two different directions (or angles).

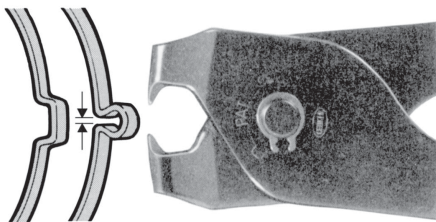
2-Ear Clamp

Zinc Plated

PART NO.	NOMINAL SIZE	CLAMPING RANGE	PRICE EACH
EC0507	1/4"	.197-.276"	Call for Pricing 800-627-1033
EC0811	3/8"	.315-.433"	
EC1113	1/2"	.433-.512"	
EC1315	9/16"	.512-.591"	
EC1518	5/8"	.591-.708"	
EC1720	3/4"	.669-.787"	
EC2023	7/8"	.787-.905"	
EC2225	15/16"	.866-.984"	
EC2327	1"	.905-1.063"	
EC2528	1 1/16"	.984-1.102"	
EC2831	1 3/16"	1.063-1.220"	
EC3134	1 5/16"	1.220-1.339"	
EC3740	1 1/2"	1.457-1.575"	

Other sizes available on request.

INSTALLATION



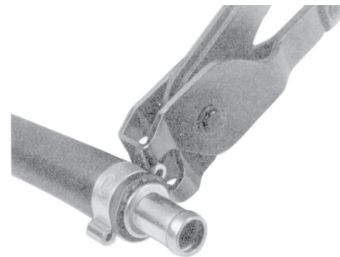
When installing Oetiker Ear Clamps, please note that each ear must be crimped as recommended to obtain a proper seal. An incorrectly made installation may impair the best connection. If a clamp ear can be closed all the way, the clamp size selected is probably too big and the next smaller clamp should be ordered.



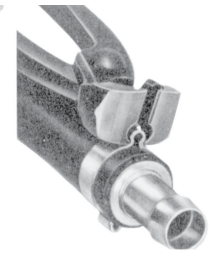
HOW TO APPLY



Position clamp on hose as illustrated.

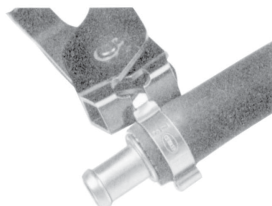


Give each ear a firm squeeze with your pincers.



Where access to ear is difficult, use the Side Jaw Pincer.

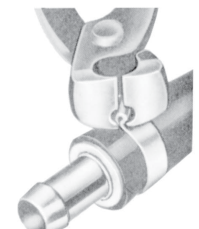
HOW TO REMOVE



Grip the outer edge of ear firmly.



Cut the ear by taking several small bites at its base with either pincer.



Then grip ear firmly and twist it off.

Maintenance Clamp Kits

2-Ear Clamp Kits - Available With or Without Pincers



Each Service Kit Contains:

- 15 pcs. #0709 5/16" Clamp
- 15 pcs. #0811 3/8" Clamp
- 15 pcs. #1113 1/2" Clamp
- 15 pcs. #1315 9/16" Clamp
- 15 pcs. #1518 5/8" Clamp
- 12 pcs. #1720 3/4" Clamp
- 12 pcs. #2023 7/8" Clamp
- 12 pcs. #2225 15/16" Clamp
- 12 pcs. #2327 1" Clamp
- 1 pc.* #1098 Pincer

*Pincer included in ECPMK1098, ECSK1098, and ECSK1098SS kits only.

Service Kits		
PART NO.	DESCRIPTION	PRICE EACH
ECSK1098	Zinc plated kit w/ECP-1098 Pincer	Call for Pricing
ECSK1098SS	Stainless steel kit w/ECP-1098 Pincer	Call for Pricing

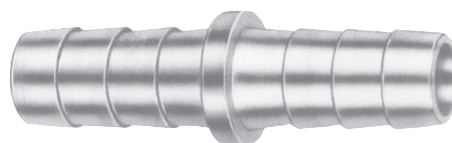
Brass Hose Splicers

PART NO.	HOSE I.D.	PRICE EACH	
		1-24	25+
STANDARD HOSE BARB			
S14	1/4"	Call for Pricing 800-627-1033	
S38	3/8"		
S12	1/2"		
S58	5/8"		
S34	3/4"		
S1	1"		
PUSH-LOCK HOSE BARB			
S14PL	1/4"	Call for Pricing	
S38PL	3/8"		
S12PL	1/2"		
S34PL	3/4"		

Repair damaged hose?

Cut hose, insert splicer, clamp it.

Like new again!



Hose/Clamp Cross Reference Chart



Worm Gear



1-ear Clamp



2-ear Clamp

HOSE	PART NO.	WORM GEAR	1-EAR CLAMP	2-EAR CLAMP
DAYCO	7107-25	PSHC-4	EC170	EC1518
	7107-38	PSHC-6	EC198	EC1720
	7107-50	PSHC-8	EC241	EC2025
	7107-75	PSHC-16	*	*
	7107-100	PSHC-20	*	*
DAYCO (Push-On)	7212-25	PSHC-4	EC145	EC1315
	7212-38	PSHC-6	EC170	EC1518
	7212-50	PSHC-8	*	EC2023
	7212-75	PSHC-16	*	*
DAYCO (GST-II) Same for 7093 Series	7092-25	PSHC-6	EC145	EC1315
	7092-31	PSHC-6	EC170	EC1518
	7092-38	PSHC-6	EC198	EC1720
	7092-50	PSHC-8	EC241	EC2023
	7092-63	PSHC-10	*	EC2528
	7092-75	PSHC-16	*	*
	7092-100	PSHC-20	*	*
DAYCO (Super-Flex) Same for 7323 Series	7322-125	PSHC-24	*	*
	7322-150	PSHC-28	*	*
	7322-200	PSHC-40	*	*
BOSTON PERFORMER II	55-1861-04	PSHC-4	EC145	EC1315
	55-1861-16	PSHC-6	EC185	EC1518
	55-1861-22	PSHC-8	EC241	EC2023
PVC HOSE Same for R and B Series	PVC-14C	PSHC-4	EC113	EC1113
	PVC-516C	PSHC-4	EC145	EC1315
	PVC-38C	PSHC-6	EC170	EC1518
	PVC-12C	PSHC-8	EC198	EC1720
	PVC-58C	PSHC-10	EC241	EC2023
	PVC-34C	PSHC-12	*	EC2528
	PVC-1C	PSHC-16	*	*
	PVC-114C	PSHC-24	*	*
	PVC-112C	PSHC-28	*	*
PVC-2C	PSHC-36	*	*	

HOSE	PART NO.	WORM GEAR
INSULATED DRYER HOSE	IDH-0200-1 IDH-0200-12	PSHC-28
	IDH-0250-1 IDH-0250-12	PSHC-28
	IDH-0300-1 IDH-0300-12	PSHC-44
	IDH-0400-1 IDH-0400-12	PSHC-64
	IDH-0500-1 IDH-0500-12	*
	IDH-0600-1 IDH-0600-12	*
RETURN DRYER HOSE	RDH-1	PSHC-10
	RDH-114	PSHC-16
	RDH-112	PSHC-20
	RDH-134	PSHC-24
	RDH-2	PSHC-28
	RDH-214	PSHC-32
	RDH-212	PSHC-36
	RDH-3	PSHC-44
	RDH-312	PSHC-52
	RDH-4	PSHC-64
	RDH-412	PSHC-64
	RDH-5	*
	RDH-512	*
	RDH-6	*
TIGERFLEX SUCTION HOSE "WT" Series, "WE" Series, Economical, Abrasion Resistant	SH114	PSHC-20
	SH112	PSHC-28
	SH2	PSHC-36
	SH212	PSHC-44
	SH3	PSHC-52
	SH312	PSHC-64
	SH4	*
	SH39	PSHC-28
	SH45	PSHC-32
	SH57	PSHC-40
SILFAB-1 & SILFAB-2 DRYER HOSE Same for 4001 Series	DH-2001-0075	PSHC-10
	DH-2001-0100	PSHC-12
	DH-2001-0125	PSHC-16
	DH-2001-0150	PSHC-20
	DH-2001-0175	PSHC-24
	DH-2001-0200	PSHC-28
	DH-2001-0225	PSHC-32
	DH-2001-0250	PSHC-36
	DH-2001-0275	PSHC-40
	DH-2001-0300	PSHC-44
	DH-2001-0325	PSHC-48
	DH-2001-0350	PSHC-52
	DH-2001-0375	PSHC-64
	DH-2001-0400	PSHC-64
	DH-2001-0450	*
	DH-2001-0500	*
	DH-2001-0550	*
	DH-2001-0600	*
	DH-2001-0800	*
	DH-2001-1000	*
DH-2001-1200	*	

*SFP does not stock this clamp size.

Spiral Double-Bolt Clamps

The last clamp you will ever buy for ribbed suction hose!

The Ultimate in Clamping for Your Vacuum Hose

FEATURES:

- Available in Clockwise Spiral & Counter-clockwise Spiral
- Recommended for Convoluted Hoses; Sizes 1½"-12"
- Reusable - THIS IS NOT A THROWAWAY CLAMP
- Lifetime Heavy Duty Clamp

FOR USE WITH OUR LINE OF SUCTION HOSES:

Clockwise Spiral (RH)

- Premium Suction Hose (ESH Series)
- Standard Duty (FG Series)
- Any Other Clockwise Spiral Hose

Counter-clockwise Spiral (LH)

- Tigerflex® Heavy Duty Suction Hose (SH Series)
- Tigerflex® Ureflex-1 Abrasion Resistant Suction Hose (USH Series)
- Any Other Counter-clockwise Spiral Hose

*"The last clamp you will ever buy
for ribbed suction hose!"*



PART NO.		FITS HOSE I.D. SIZE	PRICE EACH
Counter-clockwise Spiral Hose	Clockwise Spiral Hose		
SDBC150-CC	SDBC150	1½", 39mm	Call for Pricing
SDBC2-CC	SDBC2	2", 45mm	
SDBC225-CC	--	2¼", 57mm	
SDBC250-CC	SDBC250	2½"	
SDBC3-CC	SDBC3	3"	
SDBC350-CC	SDBC350	3½"	
SDBC4-CC	SDBC4	4"	

Other sizes available upon request.

Coupling Methods

- TIGERFLEX hose is usually coupled with pin lug short shank couplings, combination nipples or quick-disconnect couplings.
- TIGERFLEX hose ends may also be enlarged.
- TIGERFLEX PVC suction hose ends may be softened to make enlarged ends or to receive these various types of couplings by either immersing the hose ends in hot water, or in heated ethyl glycol, or by using an industrial flameless heat gun.

Dipping Method

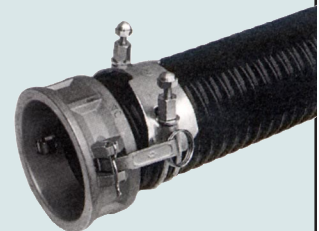
1. Dipping solution. Ethyl Glycol (anti-freeze).
2. Electric cooker, sufficient in size to hold the desired size of hose to be submerged to the required depth.
3. It is recommended the electric cooker to have a built in thermostat, with a range of 240°F to 350°F.
4. Cut the hose end square, to its desired length.
5. Place the hose end in 300°F Ethyl Glycol for approximately 2 to 5 minutes (in direct relationship to the diameter of the hose) to a depth equal to the length of the coupling shank.
6. Remove from fluid, place pre-formed clamp on hose, push desired fitting into hose.
7. Let the hose ends cool thoroughly, then tighten the hose clamps securely.

Electric Heat Gun Method

1. Direct hot air stream to inside and outside of hose end for about 2 minutes (in direct relationship to ID of hose).
2. Remove the heat gun, place pre-formed clamps over the ends of the hose.
3. Insert desired couplings into the end of the hose, allow the hose to cool thoroughly, then tighten hose clamps securely.

Recommended Procedure for Enlarged Ends

1. Follow steps 1 and 2 in the above coupling procedures.
2. Push softened end of hose onto a tapered wooden former. A liquid soap solution on this former will aid in this process.
3. Allow the hose to cool on the former. Remove from the former and check for desired dimension. (If incorrect, repeat the process again.)



Heavy Duty T-Bolt Clamps

Heavy Duty 304 Stainless Steel Band with Stainless Steel Bolt and Nut

An excellent choice for high corrosion environments.
 Permanent or semi-permanent applications.
 Provides safety on pressurized systems.
 Ideal for use with rubber hose and PVC suction hose.



General applications include

- Construction
- Agriculture
- Materials Handling

PART NUMBER	SIZE RANGE	PRICE EACH
TBC-SS019	21/32" - 3/4"	Call for Pricing 800-627-1033
TBC-SS022	25/32" - 7/8"	
TBC-SS025	29/32" - 1"	
TBC-SS028	1-1/2" - 1-3/32"	
TBC-SS031	1-5/32" - 1-15/32"	
TBC-SS035	1-1/4" - 1-3/8"	
TBC-SS039	1-3/8" - 1-9/16"	
TBC-SS043	1-5/8" - 1-13/16"	
TBC-SS047	1-3/4" - 1-15/16"	
TBC-SS051	1-7/8" - 2-1/16"	
TBC-SS055	2-1/8" - 2-5/16"	
TBC-SS059	2-1/4" - 2-7/16"	
TBC-SS063	2-3/8" - 2-9/16"	
TBC-SS067	2-17/32" - 2-13/16"	
TBC-SS073	2-21/32" - 2-15/16"	
TBC-SS079	2-29/32" - 3-3/16"	
TBC-SS085	3-1/32" - 3-5/16"	
TBC-SS091	3-9/32" - 3-9/16"	

PART NUMBER	SIZE RANGE	PRICE EACH
TBC-SS097	3-17/32" - 3-13/16"	Call for Pricing 800-627-1033
TBC-SS103	3-25/32" - 4-1/16"	
TBC-SS112	4-1/32" - 4-5/16"	
TBC-SS121	4-17/32" - 4-13/16"	
TBC-SS130	4-25/32" - 5-1/16"	
TBC-SS139	5-9/32" - 5-9/16"	
TBC-SS148	5-17/32" - 5-13/16"	
TBC-SS161	5-7/8" - 6-11/32"	
TBC-SS174	6-17/32" - 6-13/16"	
TBC-SS187	6-7/8" - 7-3/8"	
TBC-SS200	7-13/32" - 7-7/8"	
TBC-SS213	7-29/32" - 8-3/8"	
TBC-SS226	8-21/32" - 8-15/16"	
TBC-SS239	8-15/16" - 3-13/32"	
TBC-SS252	9-7/16" - 9-23/32"	

Heavy Duty T-Bolt Clamps

Heavy Duty 304 Stainless Steel Band with Carbon Steel Bolt and Nut

An excellent choice for high corrosion environments.
 Permanent or semi-permanent applications.
 Provides safety on pressurized systems.
 Ideal for use with rubber hose and PVC suction hose.



General applications include

- Construction
- Agriculture
- Materials Handling

PART NUMBER	SIZE RANGE	PRICE EACH
TBC-SSC019	21/32" - 3/4"	Call for Pricing 800-627-1033
TBC-SSC022	25/32" - 7/8"	
TBC-SSC025	29/32" - 1"	
TBC-SSC028	1-1/2" - 1-3/32"	
TBC-SSC031	1-5/32" - 1-15/32"	
TBC-SSC035	1-1/4" - 1-3/8"	
TBC-SSC039	1-3/8" - 1-9/16"	
TBC-SSC043	1-5/8" - 1-13/16"	
TBC-SSC047	1-3/4" - 1-15/16"	
TBC-SSC051	1-7/8" - 2-1/16"	
TBC-SSC055	2-1/8" - 2-5/16"	
TBC-SSC059	2-1/4" - 2-7/16"	
TBC-SSC063	2-3/8" - 2-9/16"	
TBC-SSC067	2-17/32" - 2-13/16"	
TBC-SSC073	2-21/32" - 2-15/16"	
TBC-SSC079	2-29/32" - 3-3/16"	
TBC-SSC085	3-1/32" - 3-5/16"	
TBC-SSC091	3-9/32" - 3-9/16"	

PART NUMBER	SIZE RANGE	PRICE EACH
TBC-SSC097	3-17/32" - 3-13/16"	Call for Pricing 800-627-1033
TBC-SSC103	3-25/32" - 4-1/16"	
TBC-SSC112	4-1/32" - 4-5/16"	
TBC-SSC121	4-17/32" - 4-13/16"	
TBC-SSC130	4-25/32" - 5-1/16"	
TBC-SSC139	5-9/32" - 5-9/16"	
TBC-SSC148	5-17/32" - 5-13/16"	
TBC-SSC161	5-7/8" - 6-11/32"	
TBC-SSC174	6-17/32" - 6-13/16"	
TBC-SSC187	6-7/8" - 7-3/8"	
TBC-SSC200	7-13/32" - 7-7/8"	
TBC-SSC213	7-29/32" - 8-3/8"	
TBC-SSC226	8-21/32" - 8-15/16"	
TBC-SSC239	8-15/16" - 3-13/32"	
TBC-SSC252	9-7/16" - 9-23/32"	