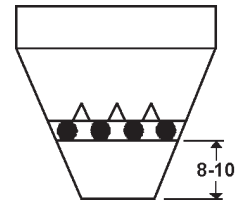
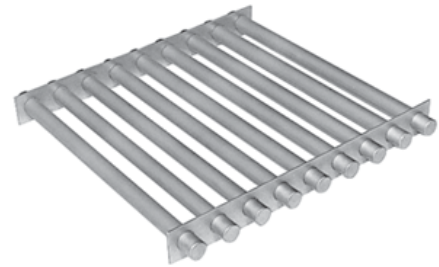


Heavy Duty Hopper Magnets



Bunting grate style **Hopper Magnets** come in a variety of shapes and sizes for use in round, square, or rectangular hoppers, chutes, housings, and bins. They are an effective way to remove ferrous metal and fragment contamination in free-flowing materials conveyed by gravity. This magnetic design provides up to *100%* more active contaminant collection area than other designs.

Each cartridge is manufactured from tough #304 stainless steel and filled with high-density Ceramic 5 permanent magnet material. The **Hopper Magnet** features all stainless steel, welded construction with optional rod or angle baffles positioned between cartridges to direct the product flow over the magnet (plain style, with no baffles, is also available). Grates should have at least twice the cross-sectional area of the hopper outlet opening.



For maximum efficiency, Hopper Magnet should be placed 8" to 10" above hopper outlet.



GR Series Round Magnets with Baffles



PART NO.	MAGNET DIAMETER	PRICE EACH
HMGR-4	4"	\$49.00
HMGR-6	6"	\$60.00
HMGR-8	8"	\$110.00
HMGR-10	10"	\$177.00
HMGR-12	12"	\$227.00

GS Series Square Magnets with Baffles



PART NO.	MAGNET L X W	PRICE EACH
HMGS-4X4	4" x 4"	\$53.00
HMGS-6X6	6" x 6"	\$65.00
HMGS-8X8	8" x 8"	\$123.00
HMGS-10X10	10" x 10"	\$195.00
HMGS-12X12	12" x 12"	\$252.00

Rectangular Hopper Magnets, Other Diverter Types, Drawer Magnets and Other Sizes Available