

Heavy Duty Safety Hoist Rings

— Safe Lifting at Any Angle — Will Not Yield to Heavy Side Loads

Safety Hoist Rings provide the maximum for safely lifting heavy loads and are designed to replace conventional lifting hardware. Our Hoist Rings provide the kind of safety that protects against accidents before they occur... accidents caused when eyebolts break or lifting hooks disengage. Unlike eyebolts, the Hoist Ring pivots 180° and swivels 360° to compensate for pitch, roll and sway when lifting heavy unbalanced loads.

FEATURES:

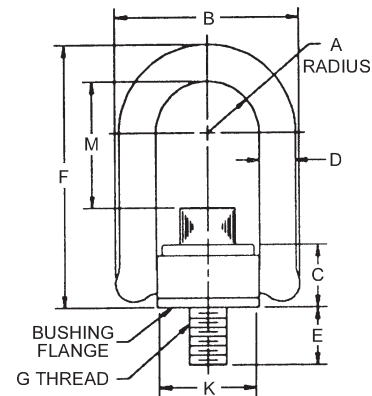
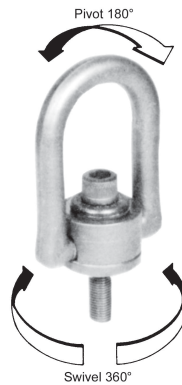
- Replaces Conventional Lifting Components
- Allows Pivoting and Rotation
- Compensates for Pitch, Roll and Sway in Lifting Heavy Unbalanced Loads
- Available in Metric or US Sizes

PATENTS:

- Patent #4,570,987 and #4,641,986
- Other Patents Pending

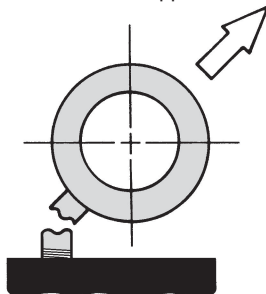
SPECIFICATIONS:

- Range of Movement: Pivot 180°, Swivel 360°
- Minimum Safety Factor = 5:1
- Meets Military Specification No. MIL-STD 1365(11) or MIL-STD 209C
- American HEAVY DUTY Hoist Rings are Specified and Used in Nuclear Energy Equipment
- 100% Magnetic Particle Inspected
- Meets OSHA Standards
- Destructive Testing by Outside Independent Laboratories
- Over 30 Years of Reliability



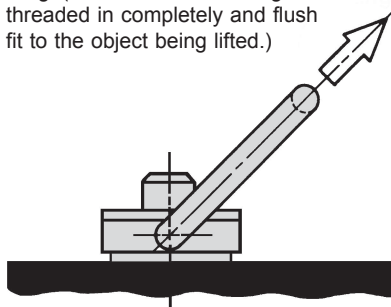
Dangerous

Conventional eyebolts can fall when excessive side loads are applied.



Safe

High tension loads are well within the designated safety limits of the Hoist Ring. (Be sure the Hoist Ring is threaded in completely and flush fit to the object being lifted.)



CONVERSION DATA (Approximation)

To Convert...	...From...	...To...	...Multiply By
Length	Millimeters (mm)	Inches (in)	0.0937
Force	Kilonewtons (kN)	Pounds (lb)	224.81
Stress	Megapascals (Mpa)	Pounds/Inch ² (psi)	145.04
Torque	Newton-Meters (N-m)	Inch-Pounds (in-lb)	8.85
Weight	Kilograms (kg)	Pounds (lb)	2.204

Standard Sizes (Inches)

PART NO.	RATED LOAD	A	B	C	D	E	F	G	K	TL* ft./lb.	M	WT lbs.	PRICE EACH
HR33112	550 lbs.	.65	2.29	.96	.44	.56	3.23	1/4-20	1.25	5	1.57	.50	Call for Pricing 800-627-1033
HR33212	800 lbs.	.65	2.29	.96	.44	.56	3.23	5/16-18	1.25	7	1.51	.52	
HR33214	800 lbs.	.65	2.29	.96	.44	1.06	3.23	5/16-18	1.25	7	1.51	.54	
HR33312	1000 lbs.	.65	2.29	.96	.44	.56	3.23	3/8-16	1.25	12	1.45	.56	
HR33314	1000 lbs.	.65	2.29	.96	.44	1.06	3.23	3/8-16	1.25	12	1.45	.58	
HR33512	2500 lbs.	1.00	3.50	1.50	.75	.75	5.31	1/2-13	1.89	28	2.56	1.71	
HR33515	2500 lbs.	1.00	3.50	1.50	.75	1.00	5.31	1/2-13	1.89	28	2.56	1.72	
HR33516	2500 lbs.	1.00	3.50	1.50	.75	1.25	5.31	1/2-13	1.89	28	2.56	1.82	
HR33612	4000 lbs.	1.00	3.50	1.50	.75	.75	5.31	5/8-11	1.89	60	2.44	1.76	
HR33614	4000 lbs.	1.00	3.50	1.50	.75	1.00	5.31	5/8-11	1.89	60	2.44	1.78	
HR33615	4000 lbs.	1.00	3.50	1.50	.75	1.25	5.31	5/8-11	1.89	60	2.44	1.88	
HR33714	5000 lbs.	1.00	3.50	1.50	.75	1.00	5.31	3/4-10	1.89	100	2.31	1.89	
HR33716	5000 lbs.	1.00	3.50	1.50	.75	1.50	5.31	3/4-10	1.89	100	2.31	2.02	
HR33108	7000 lbs.	1.40	5.10	2.05	1.00	.95	7.00	3/4-10	2.81	100	3.20	7.20	
HR33102	7000 lbs.	1.40	5.10	2.05	1.00	1.20	7.00	3/4-10	2.81	100	3.20	7.23	
HR33103	7000 lbs.	1.40	5.10	2.05	1.00	1.45	7.00	3/4-10	2.81	100	3.20	7.25	
HR33101	8000 lbs.	1.40	5.10	2.05	1.00	1.20	7.00	7/8-9	2.81	160	3.07	7.33	
HR33105	10000 lbs.	1.40	5.10	2.05	1.00	1.45	7.00	1-8	2.81	230	2.95	7.57	
HR33106	10000 lbs.	1.40	5.10	2.05	1.00	1.20	7.00	1-8	2.81	230	2.95	7.63	
HR33107	10000 lbs.	1.40	5.10	2.05	1.00	2.20	7.00	1-8	2.81	230	2.95	7.81	
HR33402	15000 lbs.	2.00	6.75	2.87	1.25	1.88	9.22	1 1/4-7	3.88	470	3.74	15.74	
HR33401	15000 lbs.	2.00	6.75	2.87	1.25	2.63	9.22	1 1/4-7	3.88	470	3.74	16.0	
HR33420	20000 lbs.	2.00	6.75	2.87	1.25	2.63	9.22	1 3/8-6	3.88	670	3.62	17.2	
HR33424	24000 lbs.	2.00	6.75	2.87	1.25	2.63	9.22	1 1/2-6	3.88	800	3.49	18.1	

*Recommended Torque Load

Metric Sizes (Millimeters)

Standard Tolerance: +.08mm

PART NO.	RATED LOAD	A	B	C	D	E	F	G	K	TL* ft./lb.	M	WT lbs.	PRICE EACH
HR34212	400 kgs.	16.5	58.2	24.4	11.1	16	82.0	M8x1.25	31.8	38.5	9.5	.24	Call for Pricing 800-627-1033
HR34214	400 kgs.	16.5	58.2	24.4	11.1	21	82.0	M8x1.25	31.8	38.5	9.5	.25	
HR34312	450 kgs.	16.5	58.2	24.4	11.1	16	82.0	M10x1.5	31.8	36.5	16.0	.25	
HR34314	450 kgs.	16.5	58.2	24.4	11.1	26	82.0	M10x1.5	31.8	36.5	16.0	.25	
HR34515	1050 kgs.	25.4	88.9	38.1	19.1	25	134.9	M12x1.75	48.0	65.0	37.0	.78	
HR34516	1050 kgs.	25.4	88.9	38.1	19.1	32	134.9	M12x1.75	48.0	65.0	37.0	.83	
HR34614	1900 kgs.	25.4	88.9	38.1	19.1	25	134.9	M16x2.0	48.0	62.0	80.0	.81	
HR34615	1900 kgs.	25.4	88.9	38.1	19.1	32	134.9	M16x2.0	48.0	62.0	80.0	.85	
HR34714	2200 kgs.	25.4	88.9	38.1	19.1	25	134.9	M20x2.5	48.0	58.7	135.0	.86	
HR34716	2200 kgs.	25.4	88.9	38.1	19.1	38	134.9	M20x2.5	48.0	58.7	135.0	.92	
HR34101	3000 kgs.	35.6	129.5	52.1	25.4	28	177.8	M20x2.5	71.4	81.0	135.0	3.14	
HR34102	4200 kgs.	35.6	129.5	52.1	25.4	28	177.8	M24x3.0	71.4	76.3	311.0	3.29	
HR34103	4200 kgs.	35.6	129.5	52.1	25.4	38	177.8	M24x3.0	71.4	76.3	311.0	3.30	
HR34105	4500 kgs.	35.6	129.5	52.1	25.4	38	177.8	M30x3.5	71.4	70.3	311.0	3.44	
HR34107	4500 kgs.	35.6	129.5	52.1	25.4	48	177.8	M30x3.5	71.4	70.3	311.0	3.55	
HR34401	7000 kgs.	50.8	171.5	72.9	31.8	67	234.2	M30x3.5	73.2	95.0	637.2	7.26	
HR34402	11000 kgs.	50.8	171.5	72.9	31.8	67	234.2	M36x4.0	73.2	88.6	1085.5	8.21	

*Recommended Torque Load

